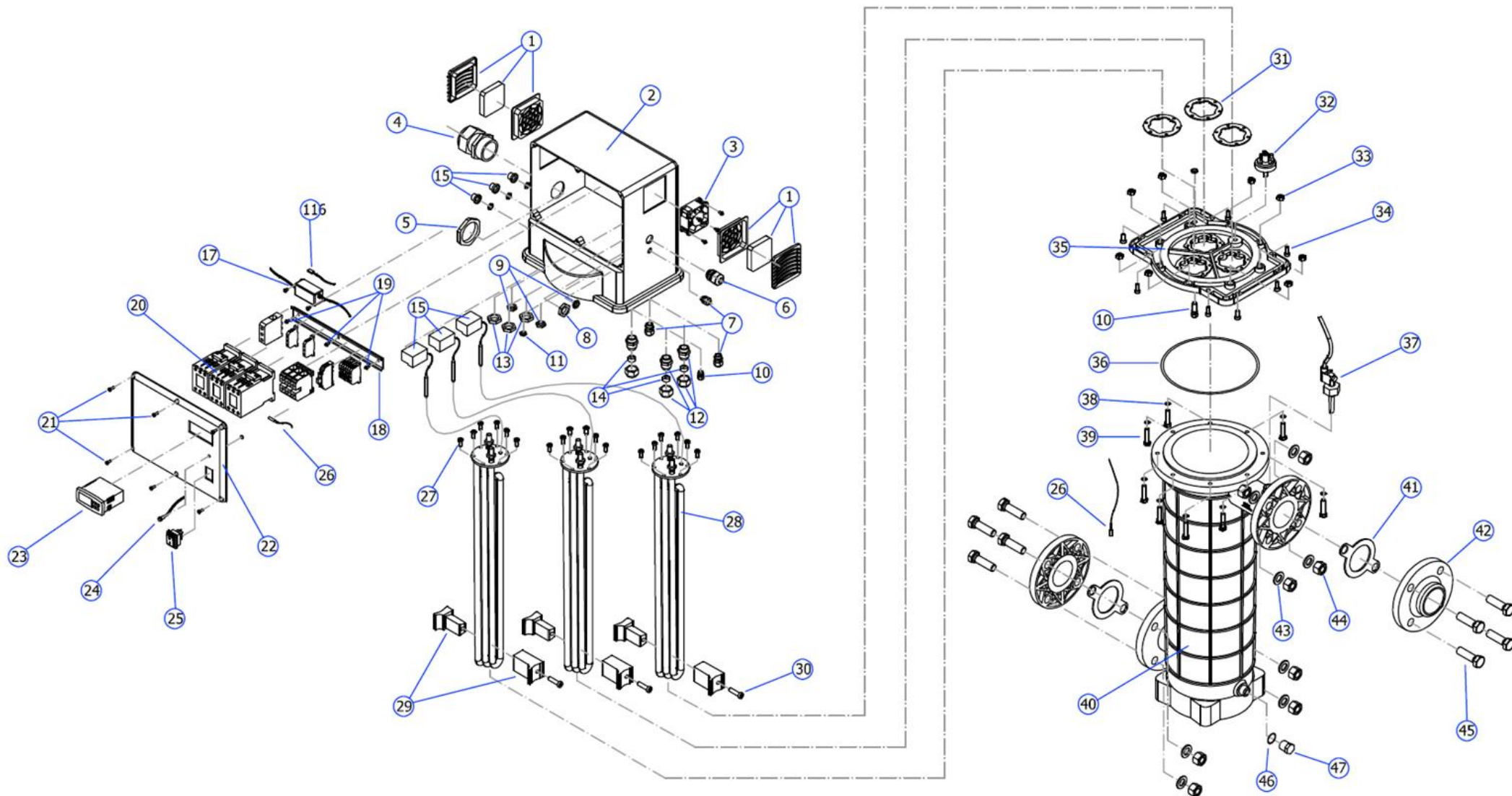


Electric heater X-EWT 2.0 18 to 72 kW plastic/chlorine or salt water



Spare parts

no. Item	no. drawing	material	description of spare part
11 41 62	1	various	exit filter
11 41 03	2	ABS	electrical box
11 41 59	3	various	axial fan
11 41 66	4	polyamide	cable gland. 19-28mm for 18 - 36 kW
11 35 04	4	polyamide	cable gland. 22-32mm for 45 - 54 kW
11 41 76	4	polyamide	cable gland. M50 for 60 - 72 kW
11 35 06	5	polyamide	lock nut M40 for 18 - 54 kW
11 41 77	5	polyamide	lock nut M50 for 60 - 72 kW
11 33 05	6	polyamide	cable gland M20 for 18 - 72 kW
11 33 15	7	polyamide	cable gland. M16 for 18 - 72 kW
11 33 07	8	polyamide	lock nut M20 for 18 - 72 kW
11 33 16	9	polyamide	lock nut M16 for 18 - 72 kW
11 33 04	10	polyamide	cable gland M12 for 18 - 72 kW
11 33 06	11	polyamide	lock nut M12 for 18 - 72 kW
11 41 69	12	polyamide	cable gland PG16 for 30 - 72 kW
11 41 70	13	polyamide	lock nut PG16 for 30 - 72 kW
11 41 71	14	TPE	sealing insert 3x4.5 for 30 - 36 kW
11 41 72	14	TPE	sealing insert 3x5 for 45 kW
11 41 73	14	TPE	sealing insert 3x6.5 for 54 - 72 kW
11 09 28	15	various	safety thermostat 55°C
11 41 79	16	various	temperature switch 40°C
11 41 58	17	various	LED driver 12 V
11 04 28	18	stainless steel	DIN rail
11 41 49	19	stainless steel	self-tapping screws 3.9x9.5
11 19 07	20	various	contactor 30 A for 18 & 45 kW
11 41 81	20	various	contactor 25A for 30 kW
11 41 80	20	various	contactor 28A for 36 kW

11 41 53	20	various	contactor 45A for 54 kW
11 41 54	20	various	contactor 50 A for 60 kW
11 41 32	20	various	contactor 50A for 72 kW
11 41 48	21	stainless steel	screws 4x10
11 41 04	22	ABS	cover for electrical box
11 32 04	23	various	digital temperature controller
11 34 02	24	various	LED pilot light IP67
11 04 11	25	various	on/off button
11 32 02	26	various	NTC sensor
11 41 45	27	stainless steel	screws M6x14
11 35 25	28	Incoloy 825	heating element 6 kW / 400V
11 35 26	28	Incoloy 825	heating element 8 kW / 400V
11 35 27	28	Incoloy 825	heating element 10 kW / 400V
11 35 21	28	Incoloy 825	heating element 12 kW / 400V
11 35 22	28	Incoloy 825	heating element 15 kW / 400V
11 35 23	28	Incoloy 825	heating element 18 kW / 400V
11 35 28	28	Incoloy 825	heating element 20 kW / 400V
11 35 24	28	Incoloy 825	heating element 24 kW / 400V
11 35 29	28	titanium	heating element 9 kW / 400V
11 35 30	28	titanium	heating element 12 kW / 400V
11 35 31	28	titanium	heating element 15 kW / 400V
11 35 32	28	titanium	heating element 18 kW / 400V
11 41 61	29	PP	anti-vibration
11 41 50	30	stainless steel	self-tapping screw 3.5x22
11 41 51	30	titanium	self-tapping screw 3.5x22
11 41 07	31	NBR	flat gasket for heating element
11 41 37	32	various	pressure switch
11 30 02	33	stainless steel	lock nuts M8
11 41 44	34	stainless steel	screws M6x16
11 41 02	35	PA66 30% FR	flange for body

11 41 06	36	NBR	OR 189.87x6.99
11 41 05	37	various	flow switch with O-ring
11 14 29	38	stainless steel	flat washers M8 x 45
11 41 60	39	stainless steel	screws M8 x 35
11 41 01	40	PA66 30% FR	shell
11 41 43	41	EPDM	flange gasket
11 41 09	42	PVC	PVC flange glue 63mm
11 36 18	43	stainless steel	flat washers M16
11 36 16	44	stainless steel	lock nuts M16x13
11 41 36	45	stainless steel	screws M16x55
11 41 56	46	NBR	OR 19x2
11 41 08	47	PVC	drain plug